

A Guide to Uniforms

Staff you are likely to meet during your visit to the ward

Clinical Support Worker (CSW)



Trained to help nurses look after patients, give personal care and make sure patients are comfortable.

Staff Nurse



A qualified nurse who gives treatment, looks after patients and monitors their recovery.

Junior Sister



A qualified nurse who supports the Senior Sister in treatment and monitoring of patients and helps organise the ward.

Senior Sister - Charge Nurse



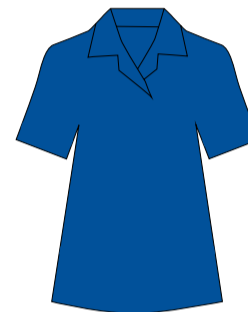
A qualified nurse who oversees the ward and its staff making sure that all patients receive the care and treatment they need.

Matron



A senior qualified nurse who manages a group of wards making sure patients receive high quality care and treatment.

Specialist Nurse



A nurse who has advanced knowledge in an area of nursing and supports people with specific conditions.

Nursing Services Manager



A senior qualified nurse who leads all the nursing staff in a team.

Housekeeper



Provides food and drink for patients and helps with administrative tasks on the ward.

Ward Clerk



Welcomes patients to the ward and helps the nursing staff with administrative tasks on the ward.

Occupational Therapist (OT)



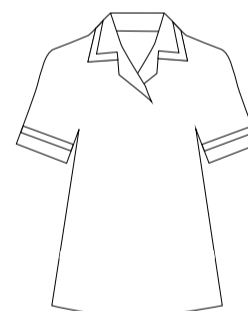
Helps patients become more independent in daily activities such as washing and dressing, and helps with plans for going home.

Physiotherapist



Assess physical problem of patients caused by surgery, illness, injury, disability or ageing and plan exercises to improve movement.

Phlebotomist



Takes blood samples from patients.

Training Nursing Associates (TNA)



Provide basic nursing care to patients as they train to become a nursing associate.

Pharmacist



Makes sure that patients receive the right medication and give advice to patients about their medicines.

Cleaner



Makes sure that the ward is kept clean.

Student Nurse



Work on the wards while studying to become a qualified nurse. They carry out tasks on the ward to help the nursing staff.

Porters



Assist with transfer of patients and equipment around the hospital.

Other Staff you may see on the ward

Doctors and Consultants wear their own clothes and will have a name badge. Other staff who wear their own clothing include social workers, dietitian and speech and language therapists.

Every member of staff should wear their name badge and introduce themselves to you, saying 'hello my name is'. If this doesn't happen then please ask, 'who are you and what do you do?'